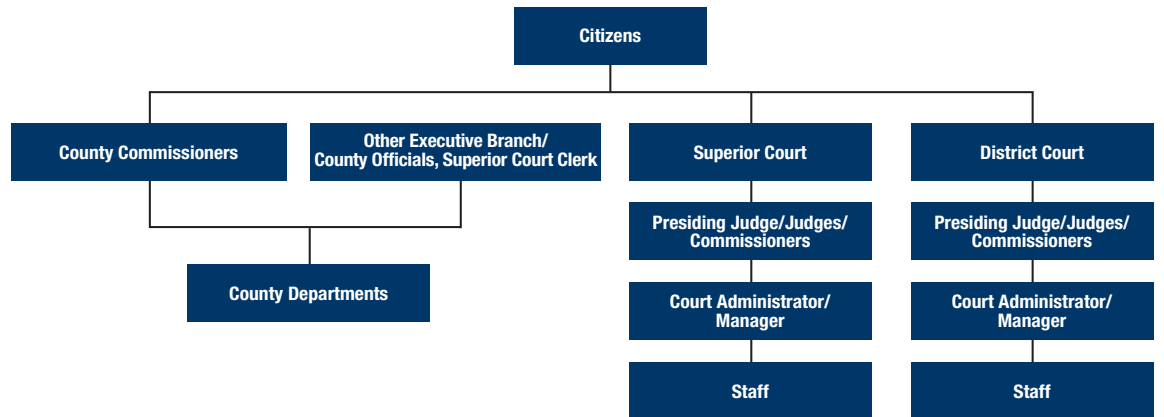




Types of Local Government

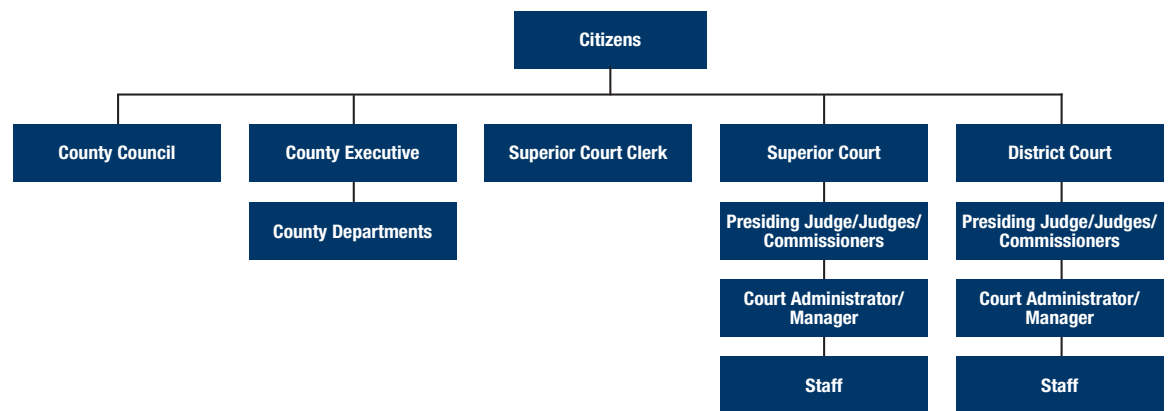
REGULAR COUNTY | County Commissioner Form of Government

Most counties in Washington derive their governmental structure from the State Constitution. Counties, through a vote of the people, may choose to modify their county governmental structure through the charter process. County Commissioners exercise executive, legislative, and some quasi-judicial powers.



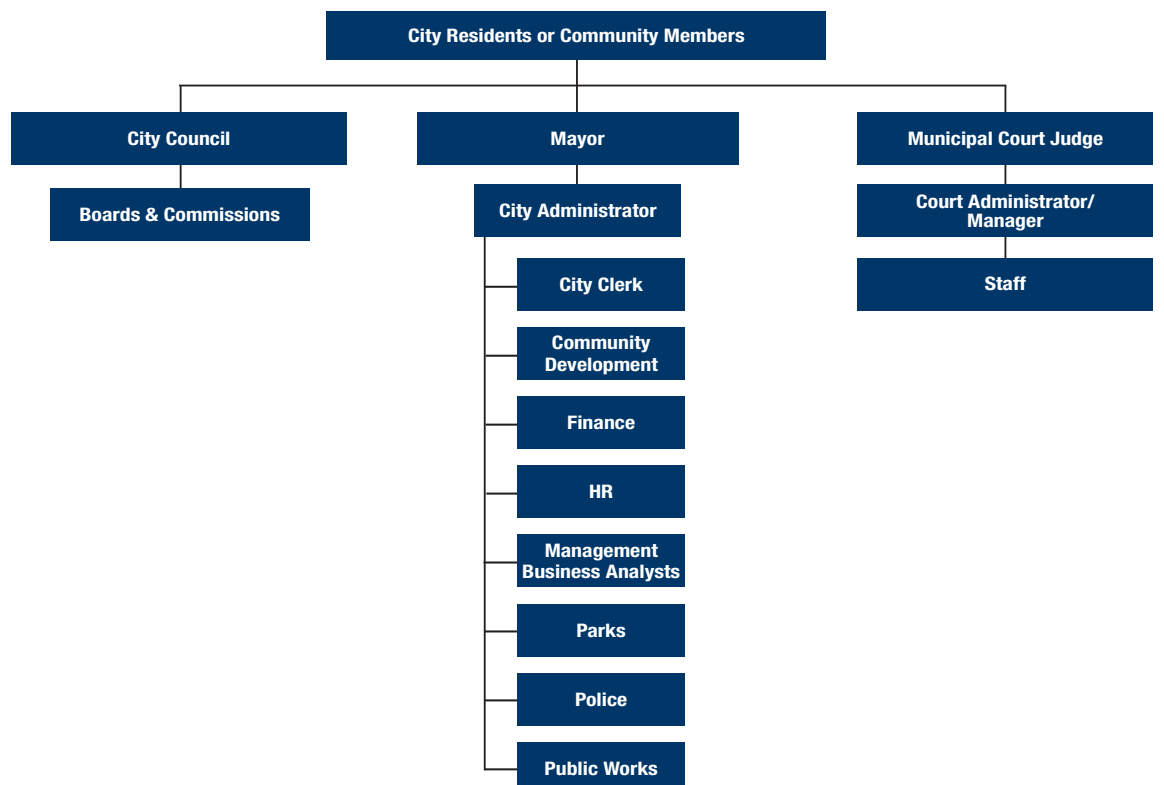
CHARTER COUNTY | County Executive Form of Government

Charter Counties in Washington: Clallam, Clark, King, Pierce, San Juan, Snohomish, and Whatcom. The Superior Court Clerk may be elected or appointed. The clerk is part of the executive branch, except in King County.



CITY GOVERNMENT | Strong Mayor Form of Government, Administrator/Manager*

Cities may opt to contract with the county or another city for court services. Judges may be elected or appointed. Full-time judges are elected. Part-time judges, however nominated, are confirmed by the City Council.



*Administrator/Manager is part of City Council.



WASHINGTON
COURTS

You can get more
information at
www.courts.wa.gov